



Statistics Publication Notice

Education Series

ISSN 1479-7569

PROVISIONAL PUPIL NUMBERS 2004, PROJECTIONS AND CHILDREN EDUCATED OUTWITH SCHOOL 2003/04

9 November, 2004
(revised 8th February 2006⁽¹⁾)

A Scottish Executive National Statistics Publication

This publication brings together education data used in the funding formula for local authority grant aided expenditure (GAE), and the results of the annual survey of children educated outwith schools.

The main findings are: -

Provisional pupil numbers

- There were 722,359 **pupils** (excluding adults) attending local authority primary, secondary and special schools in Scotland at September 2004, a decrease of 8,300 pupils from September 2003.
- The number of pupils in local authority **primary** schools was 397,853, a decrease of 7,700 pupils from September 2003.
- There were 317,494 pupils attending local authority **secondary** schools, a decrease of 345 pupils from September 2003.
- There were 7,012 pupils based in local authority **special** schools in Scotland, compared with 7,267 in September 2003.
- There were 2,789 **local authority schools** (2,218 primary, 385 secondary and 186 special) in Scotland at September 2004. The net reduction of 29 primary schools since 2003 includes eight schools which have merged with others administratively, but which are still using the same buildings.

Children educated outwith school

- There were 1,314 children who received local authority education at home or in hospital due to prolonged **ill health**, or through special arrangements put in place as a result of family illness. This compares with 1,298 in 2002/03, an increase of one per cent.

- A further 151 children received education at home under 'other **extraordinary circumstances**'. Examples of 'extraordinary circumstances' include pupils unable to attend school because of geographical remoteness, travellers' children who may spend part of the school year outwith school and prolonged adverse weather affecting the ability of island children to attend school.
- In 2003/04, 411 children were known by local authorities to be receiving home education as a result of parental choice, who had at some point in the past been in local authority school education. This figure had risen by 24 (six per cent) from the previous year.
- Another 134 children who had never been in local authority school education were known by local authorities to be receiving home education as a result of parental choice, a rise of 6 (five per cent) from the previous year.
- The total number of children known to be educated at home due to **parental choice**, 545, represents 0.08 per cent of the population aged 5-15. It is recognised that there may be more children educated outwith school who are not currently known to local authorities, and that increases in numbers known may be due to better information management.

Pupil Projections

- The **total** number of pupils receiving publicly funded education is projected to decrease steadily from the current level of 788 thousand in 2003, to 675 thousand in 2014, a decrease of 14 per cent.
- The number of pupils in publicly funded **primary** schools is projected to continue to fall steadily from the current level of 406 thousand, to 372 thousand in 2008, and then more slowly to 350 thousand in 2014, 14 per cent less than at present.
- The number of pupils in publicly funded **secondary** schools is projected to decrease slowly from the current level of 318 thousand to 313 thousand in 2006. A steady fall is then anticipated so that the number in 2014 is estimated to be 268 thousand, 16 per cent less than at present.
- The number of pupils in publicly funded **special** schools are projected to fall in line with the anticipated decrease in the number of children of school age, but have also been adjusted to account for the potential impact of mainstreaming of pupils with special educational needs.
- The percentage change in the number of pupils in publicly funded primary schools from 2003 to 2006 ranged from a 1.9 per cent decrease in West Lothian to a 11.8 per cent decrease in Argyll & Bute, excluding any effect of mainstreaming of pupils with special education needs.
- The percentage change in the number of pupils in publicly funded secondary schools from 2003 to 2006 ranged from a 4.2 per cent increase in Falkirk to a 6.2 per cent decrease in Dundee, excluding any effect of mainstreaming of pupils with special education needs.

(1) Tables 6 and 7: Pupil projections revised for South Lanarkshire

BACKGROUND NOTES

Provisional pupil numbers

1. Provisional pupil totals would normally be available from data collected as part of the annual pupil census. However, due to software problems in some LAs, it was not possible to produce provisional pupil information from this data in time for this year's GAE exercise. A separate collection was necessary for these local authorities.
2. Comprehensive analyses of the results of the September 2004 pupil census will be published in Spring 2005.

Children Educated Outwith Schools

3. This survey was run for the first time in Autumn 2001. LAs provided details of all children who were educated outwith school at any point during the school year, whether out of necessity (Section 14 of the Education (Scotland) Act 1980) or by parental choice (Section 30). The survey replaces and extends the previous survey of pupils educated outwith school (SC4) which provided only a snapshot picture of Section 14 children during a given week in September. This year's results are therefore comparable with figures from 2000/01 onwards, but not comparable with earlier figures.
4. Following the Standards in Scotland's Schools etc. Act 2000 education authorities must make special arrangements for the education of children who are unable to attend school because of prolonged ill-health and exemptions caused by family illness. The rise in this figure this year is likely to reflect increased implementation of the Act. The Executive issued guidance to authorities on this duty in December 2001. Authorities may also make special arrangements for children who cannot attend because of extraordinary circumstances.
5. Section 30 of the Education (Scotland) Act 1980 states that parents have a duty to provide efficient education for their school age children which is suited to their age, ability and aptitude. They may do this by ensuring that their child attends a local authority school regularly, or by other means, including the provision of education at home. Children who receive education at home under Section 30 do so as a result of parental choice, and are distinct from those who, due to illness or exceptional circumstances, are unable to attend school.
6. Parents of children who have started to attend a local authority school must seek the LA's consent before withdrawing their child from school to educate them at home. LAs reported that they were aware of 411 such children who were educated at home in 2003/04. Parents of children who have never attended a local authority school are not required to seek the consent of their LA in order to educate them at home. LAs reported that they were aware of 134 such children, although there may be others. If LAs become aware of such children they have a responsibility to ensure that an efficient education is being provided.
7. In March 2004 the Scottish Executive published guidance for local authorities on the circumstances in which parents may choose to educate their children at home. The purpose of this guidance is to promote a consistency of approach across Scotland by setting out the legislative position, providing advice on the roles and responsibilities of education authorities and parents, and giving examples of good practice. The guidance is available on the Scottish Executive website at <http://www.scotland.gov.uk/library5/education/gcech-00.asp> .

Pupil number projections

8. The information in this News Release is derived from:
 - a) Census of Pre-school Education Centres, 2003 and previous.
 - b) Pupil Census September 2003 and School Census September 1996 - 2002.
 - c) General Register Office for Scotland - mid-year population estimates up to 2003 for Scotland level pupil projections and mid-year population estimates to 2002 for local authorities.
 - d) General Register Office for Scotland - 2003 based population projections for the Scotland level pupil projections, 2002 based population projections for local authority primary and secondary pupil projections.

Pre-school

9. The methodology employed in projecting numbers of children in pre-school centres uses the 2003 Pre-school Census pupil counts, split by age, and population projections.
10. The assumption was made that uptake rates, in response to the Government commitment to provide a pre-school place for all three and four year olds, will be:
 - i. 90 per cent for 'three year olds' (ante pre-school year)
 - ii. around 100 per cent for 'four year olds' (pre-school year).
11. Figures used in these projections are however full-time equivalents. They are therefore lower than shown in previous years.

Primary and Secondary

12. Firstly, the model calculated the participation rate of pupils of each age, in each sector, compared to the total number of children according to the population estimates. (Data on the age of pupils were available from the 2002 and 2003 ScotXed pupil census. For previous years, data giving the stage of the pupil were converted to age using cohort-specific age/stage patterns from the 2002 and 2003 pupil census)
13. Then, for a given cohort moving through the school, the participation rate for a given year was projected using the knowledge of the previous year's participation rate for that cohort, together with the average change in participation rates at that age. (For example, if 98.5% of 6 year-olds were in mainstream primaries in 2003, and on average over the past four years the participation rate of 6 year-olds had dropped 0.3 percentage points by the time they are 7, then the projected participation rate for 7 year-olds in 2004 would be 98.2%.)
14. A similar methodology was used for 16 – 18 year olds, but some changes were made to avoid distortion due to leavers. The average change in participation rates were based on fewer years, so that more recent years were given greater weight. In addition, where the participation rate for 17 and 18 year-olds resulted in a lower participation rate than the average over 2002 and 2003, the average was used instead.
15. The participation rates for 19 year olds was calculated using the 4 year average rates for 1999-2003.
16. Participation rates for cohorts not yet in the system were calculated using four year average rates for 3, 4 and 5 year-olds, which are then projected forward using the same methodology as above.
17. The projections for pre-school and primary school age children are increasingly affected by predicted birth rates and unknown participation rates - this introduces a greater element of uncertainty. The fall in projected numbers is principally due to very low birth rates over the past few years.

18. For the Scotland level pupil projections, the General Register Office for Scotland 2003-based population projections were used. However, 2002-based population projections were used to calculate the local authority primary and secondary pupil projections (these being the latest available). The General Register Office for Scotland 2003-based population projections still indicates the trend of a slowly falling population (the same as the 2002-based projections), but the 2003-based projections indicates that this fall will take place from 2005 onwards. Therefore, it is not now expected that the Local Authority projected pupil numbers in 2004 to 2006 will eventually be as low as shown in this publication.

Special Schools

19. Pupil numbers in special schools are projected using age-specific participation rates. The lower estimate from the Audit Scotland/ HMIE publication *Moving to Mainstream* has then been used, phased in over 7 years, to adjust the figures to account for the potential impact of mainstreaming of pupils, arising from section 15 of the Standards in Scotland's Schools etc. Act 2000. These have been subtracted from the special school figures and added to primary and secondary schools in proportion to the primary/secondary ratio in mainstream pupil numbers.

Free School meal entitlement

20. Figures for free school meal entitlement, originally published in June 2004, have since been revised by some authorities. We publish here the revised figures used in GAE calculations. The 'School Meals in Scotland January 2004' publication is available at the following website <http://www.scotland.gov.uk/stats/bulletins/00347-00.asp>, but please note that the tables in this publication have not been revised. However a revised school level dataset is available at <http://www.scotland.gov.uk/stats/publist.aspx?theme=37&pillar=people>

General

21. **This is a National Statistics publication.** National Statistics are produced to high professional standards set out in the National Statistics Code of Practice. They undergo regular quality assurance reviews to ensure that they meet customer needs. They are produced free from any political interference.
22. The team responsible for producing this document were : Mal Cooke, Bianca Heggie, Debbie Hall, Colin Gallacher.
23. All tables are available on the Scottish Executive website at <http://www.scotland.gov.uk/stats/bulletins/00378-00.asp>

Enquiries

24. Public enquiries (non-media) about the information contained in this statistical publication notice should be addressed to Mal Cooke, Statistician, Scottish Executive Education Department, Room 1-A, Victoria Quay, Edinburgh EH6 6QQ.
Telephone 0131 244 1689 or e-mail school.stats@scotland.gsi.gov.uk.
25. Media enquiries about the information in this statistical publication notice should be addressed to:
Marion MacKay: 0131 244 3070

Statistical Publication Notice
9 November, 2004

Table 1: Provisional pupil numbers, by sector and local authority, September 2004

	Primary	Secondary	Special
Scotland	397,853	317,494	7,012
Aberdeen City	13,234	10,457	267
Aberdeenshire	20,018	15,881	253
Angus	9,136	7,082	-
Argyll & Bute	6,949	5,778	45
Clackmannanshire	4,081	3,239	37
Dumfries & Galloway	11,724	9,585	28
Dundee City	10,335	8,501	128
East Ayrshire	9,873	8,252	189
East Dunbartonshire	9,469	8,691	160
East Lothian	7,775	5,793	-
East Renfrewshire	8,676	7,627	51
Edinburgh, City of	26,183	20,140	735
Eilean Siar	2,098	1,923	-
Falkirk	12,019	9,152	210
Fife	28,267	22,419	159
Glasgow City	40,552	28,974	1,905
Highland	17,763	14,935	172
Inverclyde	6,492	5,571	140
Midlothian	6,694	5,556	167
Moray	7,653	6,021	-
North Ayrshire	11,409	9,205	175
North Lanarkshire	27,989	22,363	744
Orkney Islands	1,684	1,427	-
Perth & Kinross	10,458	7,920	55
Renfrewshire	13,925	11,657	304
Scottish Borders	8,672	6,992	-
Shetland Islands	1,967	1,669	-
South Ayrshire	8,407	7,384	85
South Lanarkshire	25,044	20,018	559
Stirling	6,968	6,043	41
West Dunbartonshire	7,550	6,397	124
West Lothian	14,789	10,842	279

Table 2: Children Educated Outwith School in Scotland, 2000/01 - 2003/04

	Receiving education under Section 14		Receiving education under Section 30		Total
	Due to prolonged ill-health or illness of family member	Other extraordinary circumstances ⁽¹⁾	Withdrawn from local authority school ⁽²⁾	Never attended local authority school	
2000/01	1,016	739	296	88	2,104
2001/02	1,137	40	331	120	1,628
2002/03	1,298	89	387	128	1,867
2003/04	1,314	151	411	134	2,010

(1) The 'Other extraordinary circumstances' figure for 2000/01 was high as a consequence of the foot and mouth disease outbreak.

(2) Data estimated for Edinburgh for 2000/01 and 2002/03.

Chart 1: Children Educated Outwith School in Scotland, 2000/01 - 2003/04

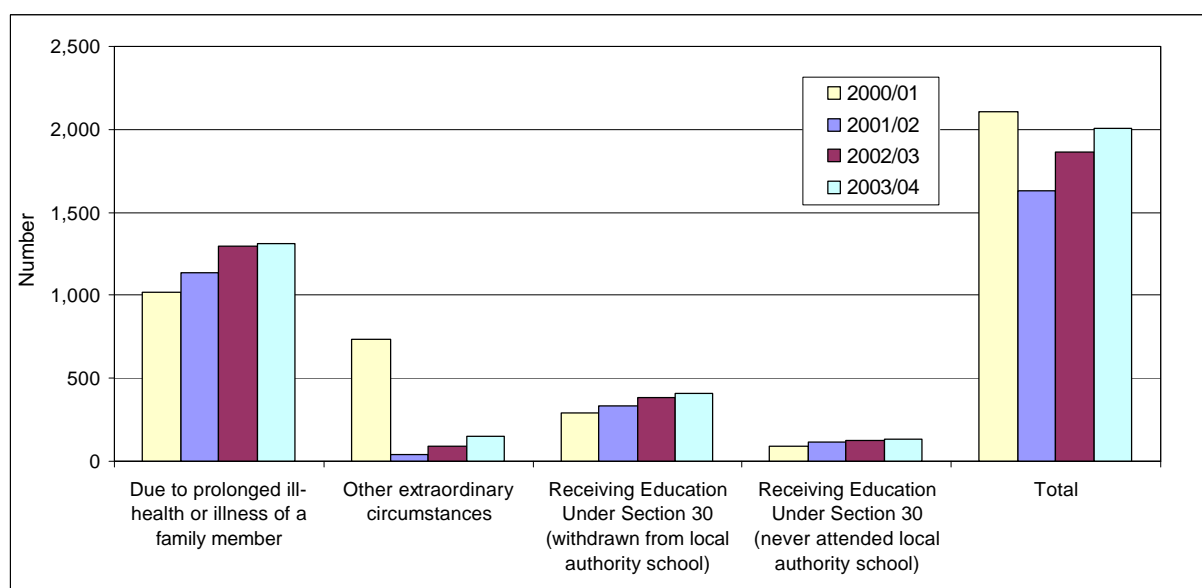


Table 3: Children Educated Outwith School, by Local Authority, 2003/04

	Receiving education under section 14		Receiving education under Section 30		Population aged 5-15 ¹	Total
	due to prolonged ill-health or illness of family member	other extraordinary circumstances	withdrawn from local authority school	Never attended local authority school		
Scotland	1,314	151	411	134	679,412	2,010
Aberdeen City	17	*	*	7	23,537	33
Aberdeenshire	*	*	24	*	34,086	31
Angus	12	-	*	*	14,563	19
Argyll & Bute	10	-	17	-	12,303	27
Clackmannanshire	11	9	*	*	6,996	25
Dumfries & Galloway	12	*	26	*	19,849	46
Dundee City	*	-	*	*	17,733	23
East Ayrshire	7	-	11	5	16,900	23
East Dunbartonshire	*	*	*	*	15,773	2
East Lothian	6	-	9	-	13,374	15
East Renfrewshire	*	*	*	*	13,826	2
Edinburgh, City of	137	-	*	*	50,172	179
Eilean Siar	*	-	*	7	3,563	16
Falkirk	26	8	29	-	20,018	63
Fife	41	16	49	11	48,291	117
Glasgow City	591	-	8	5	71,003	604
Highland	12	24	48	12	28,859	96
Inverclyde	11	*	-	*	11,372	19
Midlothian	20	*	*	*	11,683	40
Moray	13	-	9	5	12,564	27
North Ayrshire	55	-	7	12	19,532	74
North Lanarkshire	*	*	15	*	45,718	21
Orkney Islands	-	*	*	9	2,819	14
Perth & Kinross	12	31	37	24	18,300	104
Renfrewshire	*	-	-	*	23,083	50
Scottish Borders	16	-	*	*	14,673	25
Shetland Islands	*	-	*	*	3,380	20
South Ayrshire	17	9	*	*	14,440	31
South Lanarkshire	123	-	17	6	42,001	146
Stirling	18	-	*	*	11,914	26
West Dunbartonshire	*	-	*	-	12,873	53
West Lothian	*	19	*	*	24,214	39

* Number less than 5, or where if shown, it would be possible to calculate other values to be less than 5. These numbers are suppressed to protect the confidentiality of individuals. Where the figure is an authority total, it has been left in, but all detailed data, including zeros, have been suppressed.

1. Mid-year population estimates as at 30 June 2003. Please note, however, that children being educated outwith school may be aged under 5 or over 15 years old.

Table 4: 2003-based Scotland level pupil projections⁽¹⁾
 Number of pupils (thousands) at September by school sector

	Total publicly funded						Independent sector	
	incl. pre-school	excl. pre-school	Pre-school	Primary	Secondary	Special		
2000	804.30	751.23	53.07	425.22	317.70	8.31	30.17	actuals
2001	799.08	745.07	54.01	420.52	316.37	8.18	30.38	
2002	796.27	738.60	57.67	413.71	316.90	7.98	29.00	
2003	788.39	732.12	56.26	406.02	318.43	7.68	30.23	
2004	780.72	724.35	56.36	398.86	317.91	7.59	29.66	projections
2005	769.46	713.98	55.48	391.06	315.71	7.21	29.41	
2006	758.55	703.26	55.29	383.41	313.02	6.83	29.32	
2007	748.10	691.76	56.33	376.91	308.41	6.45	28.90	
2008	737.39	680.46	56.92	372.00	302.40	6.07	28.45	
2009	725.85	670.08	55.77	367.52	296.87	5.69	28.10	
2010	714.40	660.25	54.14	363.05	291.62	5.59	27.69	
2011	703.38	650.39	52.99	359.27	285.62	5.50	27.16	
2012	693.24	640.94	52.29	356.01	279.52	5.41	26.74	
2013	684.01	632.01	52.00	353.08	273.60	5.33	26.36	
2014	674.83	622.88	51.95	349.92	267.71	5.25	25.99	

(1) includes grant aided schools

Chart 2: Number of pupils (thousands) at September by school sector
 Actuals up to 2003, projections from 2004 onwards

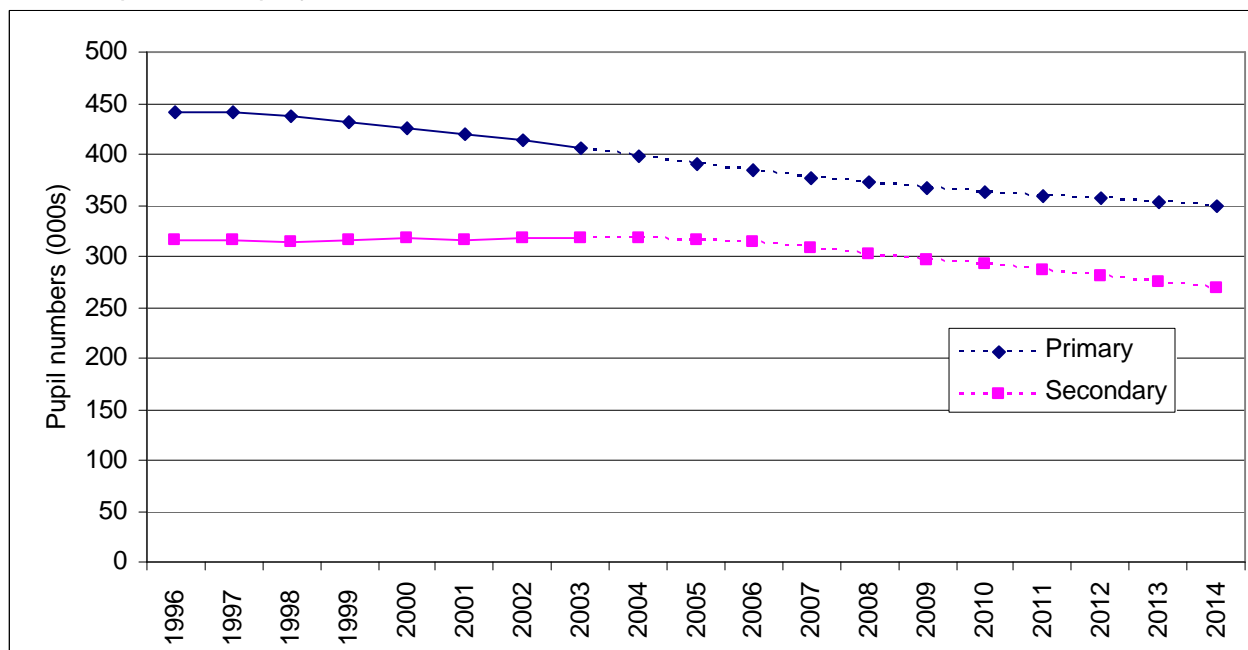


Table 5: 2003-based Scotland Level Pupil ProjectionsNumber of pupils (thousands) receiving publicly funded education at September, by age at following June⁽¹⁾

	total	3	4	5	6	7	8	9	10	11	12	13	14	15	16	17	18	19	
2000	804.3	12.9	27.9	47.9	58.5	60.7	61.7	63.9	64.0	61.5	60.8	62.9	63.0	61.3	52.5	34.5	10.0	0.1	actuals
2001	799.1	14.1	27.8	47.8	56.9	58.5	60.5	61.5	63.8	63.8	60.9	60.6	63.2	62.5	52.7	34.5	9.9	0.1	
2002	796.3	15.4	29.2	47.2	58.1	56.8	58.4	60.5	61.4	63.4	63.2	60.8	60.7	62.6	55.1	33.3	9.9	0.1	
2003	788.4	15.1	28.5	46.0	56.3	58.4	57.1	58.5	60.3	61.3	63.2	63.0	60.7	60.6	56.2	33.0	9.9	0.1	
2004	780.7	16.5	28.5	43.7	55.2	56.6	58.5	57.2	58.5	60.2	60.8	63.2	63.4	60.5	54.0	33.9	9.8	0.1	projections
2005	769.5	16.3	28.1	42.9	52.8	55.4	56.7	58.5	57.1	58.3	59.7	60.7	63.4	63.1	53.8	32.4	9.9	0.1	
2006	758.5	16.5	27.9	42.2	51.9	53.0	55.5	56.7	58.4	56.9	57.7	59.6	60.9	63.1	56.2	32.4	9.5	0.1	
2007	748.1	16.9	28.3	42.7	51.0	52.1	53.0	55.4	56.5	58.1	56.3	57.6	59.7	60.5	56.2	33.8	9.6	0.1	
2008	737.4	16.8	28.8	43.9	51.6	51.2	52.1	53.0	55.2	56.3	57.5	56.2	57.7	59.4	53.9	33.9	9.9	0.1	
2009	725.8	16.2	28.3	43.5	53.1	51.8	51.2	52.0	52.8	55.0	55.7	57.4	56.3	57.4	52.9	32.5	9.8	0.1	
2010	714.4	15.8	27.4	42.1	52.5	53.2	51.8	51.1	51.8	52.5	54.4	55.5	57.5	56.0	51.1	32.0	9.4	0.1	
2011	703.4	15.6	26.8	41.0	50.8	52.6	53.2	51.7	50.9	51.6	52.0	54.3	55.6	57.2	49.8	30.9	9.2	0.1	
2012	693.2	15.4	26.4	40.3	49.5	50.9	52.6	53.1	51.5	50.7	51.0	51.8	54.4	55.3	51.0	30.0	8.9	0.1	
2013	684.0	15.4	26.3	40.0	48.7	49.7	50.9	52.6	53.0	51.3	50.1	50.9	52.0	54.1	49.3	30.9	8.8	0.1	
2014	674.8	15.4	26.2	39.9	48.3	48.8	49.7	50.9	52.4	52.7	50.7	50.0	51.0	51.7	48.2	29.9	8.8	0.1	

(1) Hence, for example, the 2004 figures are projected numbers in school at September 2004, by what their age will be by June 2005. Pre-school figures are full-time equivalents

Table 6: 2002-based Local Authority Pupil Projections
Number of Primary School Pupils (thousands) at September

	Actual Pupil Numbers				Pupil Projections		
	2000	2001	2002	2003	2004	2005	2006
Aberdeen	15.00	14.56	14.08	13.62	13.16	12.76	12.36
Aberdeenshire	20.92	20.61	20.37	20.19	19.85	19.39	19.02
Angus	9.32	9.30	9.32	9.22	9.06	8.95	8.81
Argyll & Bute	7.62	7.37	7.28	7.14	6.90	6.59	6.29
Clackmannanshire	4.36	4.34	4.30	4.19	4.08	3.97	3.88
Dumfries & Galloway	12.50	12.39	12.14	11.92	11.54	11.11	10.66
Dundee	11.42	11.31	10.99	10.71	10.38	10.05	9.81
East Ayrshire	10.83	10.58	10.34	10.09	9.89	9.69	9.48
East Dunbartonshire	10.40	10.22	10.01	9.72	9.36	9.01	8.66
East Lothian	8.08	8.18	8.05	7.88	7.78	7.61	7.43
East Renfrewshire	8.76	8.75	8.76	8.73	8.68	8.50	8.36
Edinburgh	29.08	28.56	27.86	26.96	26.34	25.66	25.09
Eilean Siar	2.29	2.22	2.17	2.16	2.10	2.05	1.99
Falkirk	12.45	12.47	12.25	12.20	11.94	11.82	11.58
Fife	29.77	29.41	28.97	28.60	28.09	27.66	27.16
Glasgow	45.04	44.08	43.11	41.79	40.60	39.64	38.76
Highland	18.76	18.43	18.19	18.08	17.69	17.34	16.93
Inverclyde	7.38	7.15	6.92	6.70	6.56	6.37	6.16
Midlothian	7.26	7.23	6.99	6.90	6.79	6.70	6.59
Moray	7.81	7.85	7.83	7.78	7.57	7.35	7.07
North Ayrshire	12.21	12.12	11.97	11.73	11.35	10.98	10.65
North Lanarkshire	29.02	28.87	28.65	28.30	28.02	27.62	27.39
Orkney Islands	1.78	1.75	1.69	1.67	1.63	1.58	1.52
Perth & Kinross	10.70	10.72	10.67	10.52	10.38	10.27	10.17
Renfrewshire	15.09	14.95	14.61	14.31	13.96	13.71	13.52
Scottish Borders	9.03	8.95	8.92	8.77	8.68	8.60	8.55
Shetland Islands	2.12	2.10	2.07	2.01	1.95	1.90	1.84
South Ayrshire	9.10	8.97	8.76	8.68	8.56	8.39	8.28
South Lanarkshire ⁽²⁾	26.34	26.14	25.82	25.27	24.91	24.35	23.81
Stirling	6.99	7.04	7.02	7.04	7.03	6.98	6.88
West Dunbartonshire	8.38	8.32	8.10	7.82	7.60	7.38	7.17
West Lothian	14.98	15.16	15.06	14.90	14.91	14.74	14.61

(1) No adjustment has been made in this table for any effect of mainstreaming

(2) Projections revised 8th February 2006

Table 7: 2002-based Local Authority Pupil Projections
Number of Secondary School Pupils (thousands) at September

	Actual Pupil Numbers				Pupil Projections		
	2000	2001	2002	2003	2004	2005	2006
Aberdeen	10.98	10.94	10.63	10.55	10.43	10.15	9.93
Aberdeenshire	15.33	15.31	15.52	15.67	15.78	15.90	15.83
Angus	7.21	7.11	6.97	7.10	7.20	7.23	7.23
Argyll & Bute	5.59	5.59	5.64	5.74	5.72	5.65	5.58
Clackmannanshire	3.07	3.04	2.97	2.99	3.05	3.03	3.01
Dumfries & Galloway	9.76	9.62	9.67	9.56	9.55	9.46	9.39
Dundee	8.88	8.81	8.66	8.59	8.44	8.29	8.06
East Ayrshire	8.03	8.07	8.13	8.18	8.12	8.01	7.87
East Dunbartonshire	8.86	8.86	8.85	8.99	8.98	8.85	8.65
East Lothian	5.24	5.32	5.48	5.64	5.74	5.81	5.85
East Renfrewshire	7.28	7.34	7.51	7.59	7.60	7.74	7.69
Edinburgh	19.81	20.01	20.12	20.22	19.98	19.65	19.26
Eilean Siar	1.93	1.95	1.98	1.95	1.97	1.93	1.88
Falkirk	8.51	8.50	8.65	8.93	9.15	9.22	9.31
Fife	23.20	23.03	22.95	22.70	22.57	22.36	22.22
Glasgow	29.30	29.38	29.23	29.32	28.98	28.37	27.78
Highland	14.66	14.72	14.75	14.81	14.82	14.81	14.80
Inverclyde	5.77	5.68	5.68	5.64	5.53	5.44	5.34
Midlothian	5.57	5.59	5.66	5.65	5.68	5.67	5.63
Moray	5.73	5.72	5.83	5.95	6.00	6.02	6.04
North Ayrshire	9.18	9.09	9.23	9.28	9.23	9.13	9.10
North Lanarkshire	22.71	22.45	22.40	22.47	22.32	22.18	21.91
Orkney Islands	1.36	1.37	1.46	1.44	1.46	1.44	1.43
Perth & Kinross	7.73	7.59	7.71	7.83	7.95	8.03	8.06
Renfrewshire	11.97	11.78	11.89	11.79	11.72	11.60	11.37
Scottish Borders	6.69	6.81	6.86	6.93	7.02	7.05	7.05
Shetland Islands	1.64	1.62	1.67	1.67	1.68	1.69	1.67
South Ayrshire	7.75	7.61	7.50	7.50	7.45	7.34	7.23
South Lanarkshire ⁽²⁾	20.32	19.90	19.78	19.96	19.97	19.88	19.82
Stirling	5.74	5.75	5.81	5.92	5.95	5.90	5.90
West Dunbartonshire	6.88	6.61	6.58	6.47	6.36	6.23	6.16
West Lothian	10.44	10.62	10.56	10.82	10.86	10.88	10.82

(1) No adjustment has been made in this table for the effect of mainstreaming

(2) Projections revised 8th February 2006

Table 8: Pupils entitled to free school meals by sector, 1997 to 2004

Revisions from the School Meals Survey January 2004

		1997	1998	1999	2000	2001	2002	2003	2004
Pupils on school roll	Total	754,739	748,529	747,968	744,577	739,511	733,520	730,372	723,355
	Primary	440,486	438,024	436,149	430,522	424,525	421,158	414,691	406,919
	Secondary	306,758	302,791	304,406	306,159	307,024	304,451	308,086	308,770
	Special	7,495	7,714	7,413	7,896	7,962	7,911	7,595	7,666
Pupils entitled to free meals	Total	163,467	164,193	154,458	150,938	144,284	138,482	137,396	137,743
	Primary	105,165	104,702	96,840	93,406	88,286	85,331	83,597	83,580
	Secondary	53,135	54,381	53,264	52,788	51,194	48,455	49,389	49,530
	Special	5,167	5,110	4,354	4,744	4,804	4,696	4,410	4,633
Pupils registered for free meals ⁽¹⁾	Total								126,681
	Primary								77,108
	Secondary								45,018
	Special								4,555
Percentage of pupils entitled to free meals	Total	21.7	21.9	20.7	20.3	19.5	18.9	18.8	19.0
	Primary	23.9	23.9	22.2	21.7	20.8	20.3	20.2	20.5
	Secondary	17.3	18.0	17.5	17.2	16.7	15.9	16.0	16.0
	Special	68.9	66.2	58.7	60.1	60.3	59.4	58.1	60.4

(1) Not collected before 2004

Table 9: Entitled pupils taking free school meals by sector, 1997 to 2004

Revisions from the School Meals Survey January 2004

		1997	1998	1999	2000	2001	2002	2003	2004
Pupils entitled to free meals	Total	163,467	164,193	154,458	150,938	144,284	138,482	137,396	137,744
	Primary	105,165	104,702	96,840	93,406	88,286	85,331	83,597	83,580
	Secondary	53,135	54,381	53,264	52,788	51,194	48,455	49,389	49,530
	Special	5,167	5,110	4,354	4,744	4,804	4,696	4,410	4,633
Pupils entitled to and taking free meals	Total	114,364	109,686	108,409	109,953	103,289	100,203	96,742	95,279
	Primary	79,652	76,179	74,324	73,500	68,649	67,084	64,547	63,578
	Secondary	30,114	29,094	30,202	32,293	30,376	29,028	28,245	27,657
	Special	4,598	4,413	3,883	4,160	4,264	4,091	3,950	4,044
Percentage of entitled pupils taking free meals	Total	70.0	66.8	70.2	72.8	71.6	72.4	70.4	69.2
	Primary	75.7	72.8	76.7	78.7	77.8	78.6	77.2	76.1
	Secondary	56.7	53.5	56.7	61.2	59.3	59.9	57.2	55.8
	Special	89.0	86.4	89.2	87.7	88.8	87.1	89.6	87.3

Table 10: Pupils in education authority primary schools:
Number of pupils entitled, registered and taking free school meals, 2004
Revisions from the School Meals Survey January 2004

	Pupils on the school roll	Pupils entitled to free meals	Pupils entitled and registered for free meals	Registered pupils present on census day	Pupils present and taking free meals
Scotland	406,919	83,580	77,108	70,394	63,578
Aberdeen City	13,752	2,773	2,196	1,983	1,824
Aberdeenshire	20,319	1,623	1,623	1,502	1,440
Angus	9,281	1,513	1,199	1,068	920
Argyll & Bute	7,105	917	917	855	801
Clackmannanshire	4,201	998	940	870	767
Dumfries & Galloway	11,959	1,345	1,345	1,243	1,157
Dundee City	10,657	2,823	2,199	2,012	1,894
East Ayrshire	10,100	2,101	2,101	1,978	1,812
East Dunbartonshire	9,773	827	827	784	636
East Lothian	7,908	1,553	966	883	830
East Renfrewshire	8,764	823	748	710	568
Edinburgh, City of	26,828	5,805	5,242	5,003	4,595
Eilean Siar	2,177	269	269	250	244
Falkirk	12,213	2,307	2,251	2,093	2,066
Fife	28,716	6,704	5,147	4,789	4,245
Glasgow City	41,796	17,516	17,516	15,561	13,910
Highland	18,013	2,565	2,358	2,103	1,939
Inverclyde	6,700	1,655	1,655	1,571	1,367
Midlothian	6,867	1,241	1,068	983	953
Moray	7,825	786	754	687	642
North Ayrshire	11,721	2,984	2,886	2,613	2,425
North Lanarkshire	28,303	6,633	6,195	5,610	4,864
Orkney Islands	1,709	372	372	340	335
Perth & Kinross	10,660	881	869	822	760
Renfrewshire	14,336	3,240	2,788	2,653	2,308
Scottish Borders	8,921	731	731	676	604
Shetland Islands	2,018	135	135	126	123
South Ayrshire	8,649	1,567	1,473	1,398	1,196
South Lanarkshire	25,398	4,904	4,868	4,149	3,660
Stirling	7,060	964	964	894	777
West Dunbartonshire	7,819	2,064	2,054	1,903	1,779
West Lothian	14,909	2,961	2,452	2,282	2,137
Grant Maintained	462	-	-	-	-

Table 11: Pupils in education authority secondary schools:
Number of pupils entitled, registered and taking free school meals, 2004
Revisions from the School Meals Survey January 2004

	Pupils on the school roll	Pupils entitled to free meals	Pupils entitled and registered for free meals	Registered pupils present on census day	Pupils present and taking free meals
Scotland	308,770	49,530	45,018	36,914	27,657
Aberdeen City	10,299	1,155	870	711	554
Aberdeenshire	15,457	741	741	581	457
Angus	6,957	729	596	469	431
Argyll & Bute	5,539	506	506	431	330
Clackmannanshire	2,943	519	472	380	237
Dumfries & Galloway	9,383	636	636	574	493
Dundee City	8,160	1,653	1,203	953	701
East Ayrshire	7,868	1,210	1,210	1,018	833
East Dunbartonshire	8,728	799	757	607	392
East Lothian	5,437	902	480	397	297
East Renfrewshire	7,402	694	572	501	361
Edinburgh, City of	19,525	3,122	2,770	2,333	1,876
Eilean Siar	1,925	152	152	104	103
Falkirk	8,710	1,289	1,233	1,051	935
Fife	21,983	4,136	2,818	2,391	1,950
Glasgow City	29,367	10,400	10,400	8,441	5,901
Highland	14,460	1,517	1,365	1,147	911
Inverclyde	5,350	1,062	1,062	979	596
Midlothian	5,364	612	605	605	324
Moray	5,739	438	438	371	262
North Ayrshire	8,812	1,894	1,812	1,560	1,205
North Lanarkshire	21,438	3,910	3,702	3,097	2,419
Orkney Islands	1,423	207	207	159	159
Perth & Kinross	7,609	439	420	357	329
Renfrewshire	11,285	2,113	1,805	1,379	1,118
Scottish Borders	6,794	379	379	322	258
Shetland Islands	1,634	79	79	72	64
South Ayrshire	7,173	1,025	966	777	575
South Lanarkshire	19,207	3,242	3,223	2,520	1,447
Stirling	5,714	693	693	523	397
West Dunbartonshire	6,170	1,653	1,509	1,060	873
West Lothian	10,336	1,621	1,334	1,041	866
Grant Maintained ⁽¹⁾	579	*	*	*	*

(1) Where numbers involve fewer than five individuals, data has been marked by a *. Where this figure then contributes to the total, it has been substituted by the figure 3