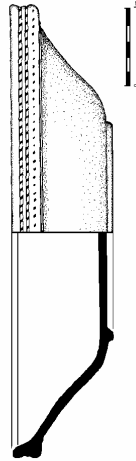
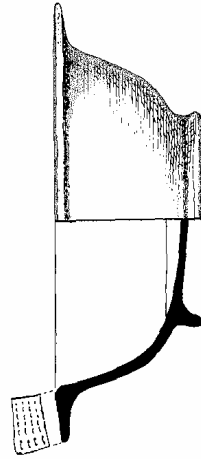


0 5 CM

Bi amphora



Phocean Red Slip Ware Form 3 Bowl



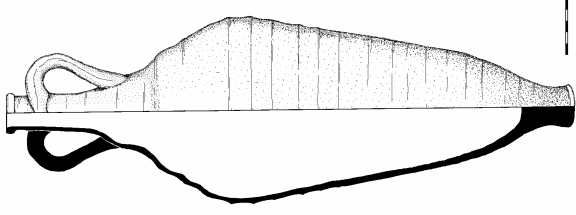
0 5 CM

African Red Slip Ware Bowl

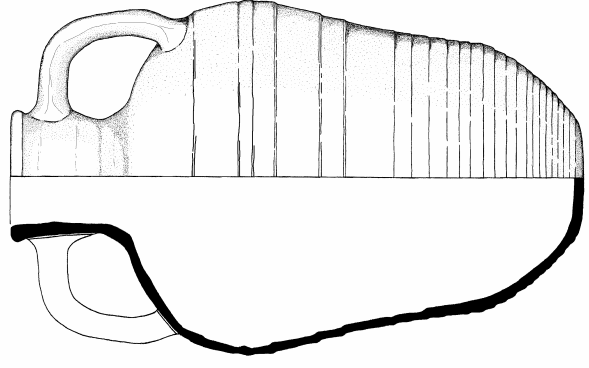
PRSW PHOCAEAN RED SLIP WARE
 (Formerly called Tintagel A1)
ARSM AFRICAN RED SLIP WARE
 (Formerly called Tintagel A11)
BI AMPHORAS WITH "COMBED" DECORATION
 (Formerly called Tintagel Class B)
Bii AMPHORAS WITH COARSE RIBBED DECORATION
 (Formerly part of Tintagel Class B)
 [**Biii** now designated MISCELLANEOUS B AMPHORAS]
BIV HANDLED JARS
BV BYZACENA CYLINDRICAL AMPHORAS
BVI GAZA AMPHORAS
 (Not yet identified at Cornish sites)
D GAULISH GREY WARES
 (Including morbario)
E GAULISH ROBUST KITCHEN WARES
 (Usually associated with D wares.)
 Date after A. C. Thomas 1981



Sources of Imported Post-Roman Pottery



Biv amphora



Bii amphora